

## Seminar 3: Housing First and Institutional Transitions (Room: 01.15)

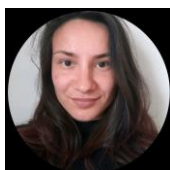
Chair: Volker Busch-Geertsema, DE

**Ronni Greenwood, Rob Lowth, Antonia Bura, IE: Innovations in Implementation: Interagency Coordination of Housing, Health, and Case Management Services in Ireland's National Housing First Programme**



**Dr Ronni M. Greenwood is a Social-Community Psychologist, Senior Lecturer in Psychology at University of Limerick. Her research focuses on the effects of homeless services on clients' recovery and well-being. She was a co-investigator on the Horizon 2020-funded project, "Homelessness as Unfairness" (<https://cordis.europa.eu/project/id/726997>). A Programme Implementation and Evaluation Consultant, she served as the PI for the National Housing First Implementation Evaluation and Principal Programme Evaluator for the Dublin Housing First Demonstration. Her introduction to Housing First was as the Assistant Director for Research on the first-ever randomised trial of Housing First at Pathways to Housing in New York City.**

**Rob Lowth is the National Director of Housing First. He is a former Housing Senior Executive Officer, Housing Maintenance Manager and Co-ordinator of Homeless Services at Limerick City and County Council in a Local Government career that began in 2003. He previously worked as an Engineering and Project Manager in Technology Companies based in Dublin, Galway and Limerick. Rob holds technical qualifications in Computer Systems and Programming while in 2013 he completed a BA in Management at the Institute of Public Administration.**



**Antonia Bura is the Research and Data Officer with HSE, National Social Inclusion Office. Antonia's remit is homeless health and improvement of access to mainstream and targeted health services for people experiencing homelessness in Ireland. Antonia holds both a BA and MA in Psychology and a diploma in predictive data analytics. Currently, she is in training for qualification as a Humanistic Integrative Psychotherapist. Antonia's previous role was as a project worker with people experiencing homelessness.**

In 2018, the Government of Ireland announced a plan to implement Housing First programmes in each large city outside Dublin, supported by a philanthropic Service Reform Fund, with the aim to deliver 663 tenancies by 2021. In each region, local authorities, NGOs, and the Health Services Executive worked together to deliver housing, housing supports, case management services, and health care needs to Housing First clients. Each programme developed procedures for determining eligibility, intake, housing procurement, and housing allocations. Each region also developed its own approach to configuring HF teams and brokering services in the community. At the same time, each HF programme was responsible for adhering to the core principles, practices, and values of HF and for supporting their clients with a high degree of fidelity to the Pathways HF model. To date, the expanded national programme is active in each of the 31 Local Authorities, 865 HF tenancies have been established, and housing retention rates average 86%, meeting or exceeding achievements in other European contexts. In this presentation, we will describe the Irish approach to interagency coordination to deliver a national Housing First programme, evaluation outcomes and plans for capturing client outcomes over time. For example, the fidelity and client outcomes obtained in the national evaluation demonstrate high levels of housing retention, model fidelity, positive client outcomes (e.g., choice in housing and services, psychiatric symptoms, problematic substance use, satisfaction with life), benchmarked against international findings. Initial findings from the Housing First Health Monitoring Tool, designed to assess Housing First participants' health outcomes over

time and tailor resource requirements to their changing needs, will be discussed. Structures and governance developed to oversee, coordinate, drive, expand, develop, and monitor the national cross-Government plan to support regional and local delivery of Housing First programmes will also be explained.

## **Cecilia Heule, Marcus Knutagård, Arne Kristiansen, SE: RECO: Resilient Communities by Sustainable Welfare Transformation**



**Cecilia Heule is a teacher and researcher at the School of Social Work, Lund university. Her research interests include service user participation, gap-mending strategies, and co-production. She is international coordinator of the international network PowerUs ([www.powerus.eu](http://www.powerus.eu)). She is involved in the research project RECO: Resilient Communities by Sustainable Welfare Transformation.**

**Arne Kristiansen, PhD, is associate professor at School of Social Work, Lund University. His research interests include homelessness, substance abuse and service user involvement. He is currently involved in two research projects: “Scanian homes: Reception, settlement or rejection – homelessness policies and strategies for refugee settlement” and “RECO - Resilient Communities by Sustainable Welfare Transformation”.**



**Marcus Knutagård is an associate professor at the School of Social Work, Lund University. His research interests include housing policy, homelessness and the importance of place for how social work is organised – its moral geography. He is involved in several research projects on homelessness. One of them is RECO: Resilient Communities by Sustainable Welfare Transformation.**

An extensive societal problem in Sweden which poses major challenges for the social services in developing sustainable and effective methods that can meet the service user's needs. The RECO project is based on practice research and has mutual learning at its core. The aim is to investigate and analyse how evidence-based methods like Housing First can be sustained within the social services and how implemented methods can become resilient towards external pressures. The research questions are:

- What factors facilitate or hinder high programme fidelity and what are the Housing First tenants' experiences of the programme?
- What conditions are beneficial when trying to work knowledge-based in the social services efforts to combat homelessness?
- What methods enable participation and involvement with service users?
- What impacts and consequences do the participation have on the involved social workers and service users?

Our ambition is to present the ongoing research project and also briefly present the new homelessness strategy in Sweden.