

Seminar 1: Youth Prevention I (Room: 00.12)

Chair and discussant: **Nicholas Pleace, UK**

Evelien Demaerschalk, BE: Upstream Flanders

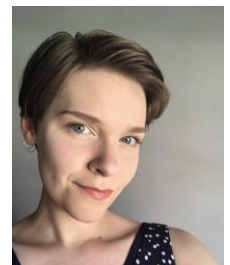
Evelien Demaerschalk is a researcher at LUCAS, Center for Care Research and Consultancy. Her work focuses on care and support for vulnerable and underserved populations in society. Currently she is involved in the development and organisation of local and regional homelessness counts in Belgium.



Early detection and intervention are basic pillars for preventing and ending homelessness among young adults. One of the important cornerstones of this level of prevention is early intervention within the school context. International Upstream projects show that investing on this prevention level is successful. The cities that worked with this broad screening saw a 40% drop in homelessness among young adults and 20% reduction in school dropouts (MacKenzie, 2018). With Upstream Flanders, we want to set up a pilot project in three Flemish regions. LUCAS KU Leuven is the research partner of the project; the coordination is provided by the Flemish Government (Agency of Growing Up). In the first research phase, we will start with the development of a questionnaire measuring effective homelessness and its risk factors. For the development of the questionnaire and the underlying flagging system, we build on the work and first experiences of the Upstream projects in Wales, USA, Canada and Australia. Together with the Flemish pilot projects, we then choose a working method that best suits the reality and wishes of the communities of schools and services. In a second research phase, we will study how tailor-made support for the community of schools and services is implemented in the different local projects. To answer this question, we firstly analyse the international Upstream projects and zoom in on both the adolescent-centred and family-centred approach. Together with the pilot projects, we look at how these international experiences can be translated to the Flemish projects. A third research phase consists of following up, monitoring, and evaluating the first 3 pilot projects. For this, we collect quantitative data during the project as well as additional file analysis and more qualitative analysis of the projects' experiences. In this presentation, we focus on the first results of the first and second phase of the project.

Amanda Buchnea, CA: Upstream Canada and the Upstream International Living Lab

Amanda Buchnea is the Manager of Geneva UN Charter Centre of Excellence on Youth Homelessness Prevention at York University with the Making the Shift Youth Homelessness Social Innovation Lab. She has worked in the field of youth homelessness prevention research and policy advocacy since completing her Masters in Public Policy at the University of Toronto. She is a PhD Candidate at the University of Guelph in the Social Practice and Transformational Change program where she studies cross-systems change in support of housing and social justice.



The effort to address youth homelessness in Canada is increasingly driving forward the need for prevention approaches with youth well before they reach crisis, and the role of schools to connect with students. This presentation will review the successes and challenges of implementing the Upstream Project model in two Canadian municipalities, including preliminary results. It will also introduce the Upstream International Living Lab, which brings together countries adapting Upstream to their local contexts to exchange knowledge internationally.