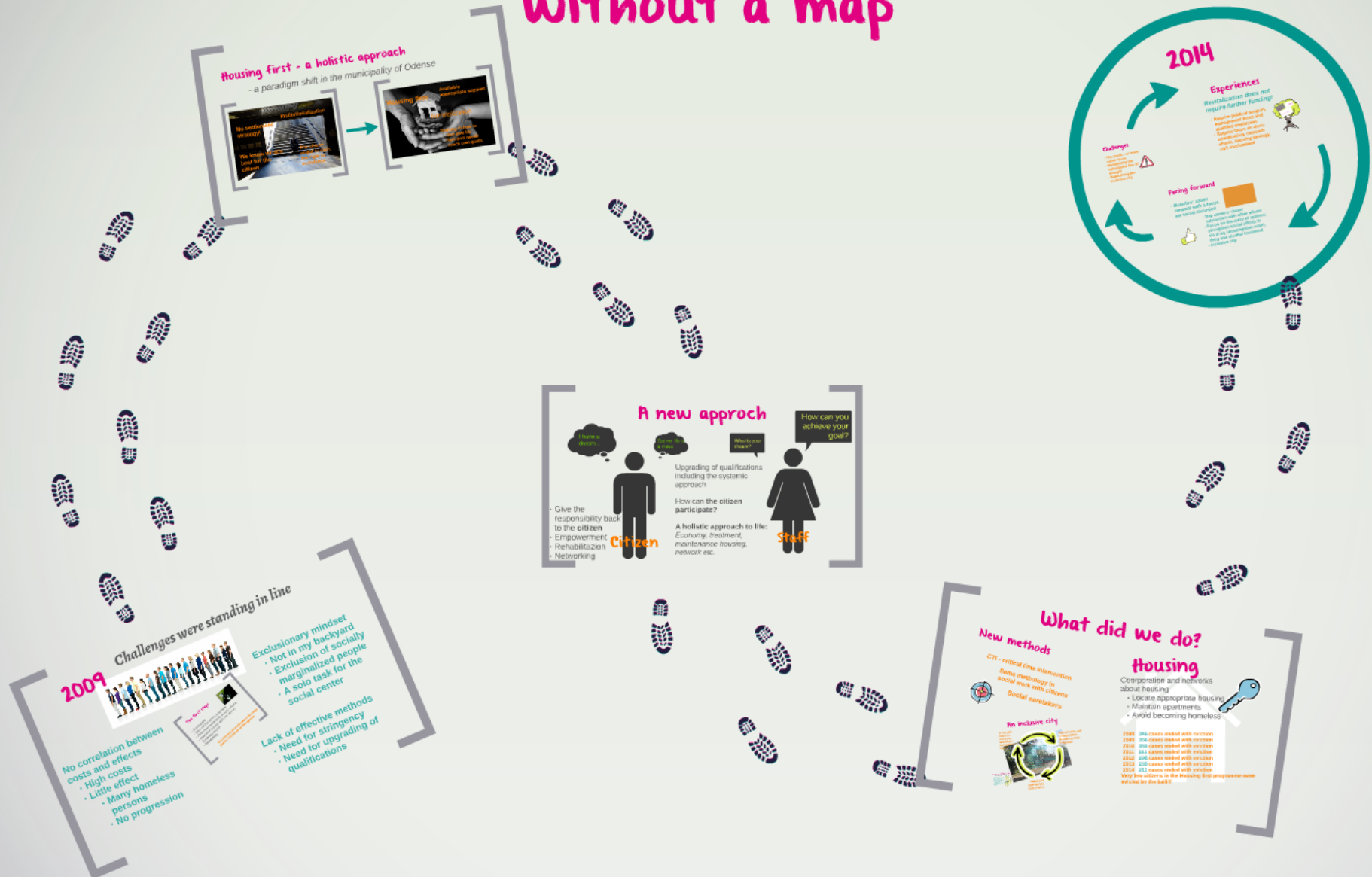


# Housing first - a journey without a map







2009

## *Challenges were standing in line*



### No correlation between costs and effects

- High costs
- Little effect
  - Many homeless persons
  - No progression

#### *The first steps*

- At gunpoint
- Take control of the economy
- Find new methods to secure effects
- New interactions with the citizen (empowerment)
- Networking

*The National Homelessness Strategy put the challenge on the agenda*



### Exclusionary mindset

- Not in my backyard
- Exclusion of socially marginalized people
- A solo task for the social center

### Lack of effective methods

- Need for stringency
- Need for upgrading of qualifications

# The first steps



- At gunpoint
- Take control of the economy
- Find new methods to secure effects
- New interactions with the citizen (empowerment)
- Networking

**The National Homelessness Strategy  
put the challenge on the agenda**

# Housing first - a holistic approach

*- a paradigm shift in the municipality of Odense*





A photograph of a person sitting on a long, empty staircase in a subway station. The person is wearing a dark jacket and is looking down. The stairs are made of concrete and have metal railings. The ceiling is made of dark, horizontal slats. The lighting is dim, and the overall atmosphere is one of isolation and despair.

**Institutionalization**

**No settlement  
strategy!**

**We know what's  
best for the  
citizen**

**The citizen  
ought to earn  
the right to  
assistance**



**Housing first**

**Available  
appropriate support**

**Normalization**

**Training in how to**

- live own life
- feel own needs
- reach own goals

# A new approach

I have a dream...

But my life is a mess

What is your dream?

How can you achieve your goal?

- Give the responsibility back to the **citizen**
- Empowerment
- Rehabilitation
- Networking

**Citizen**

Upgrading of qualifications including the systemic approach

How can the **citizen** participate?

**A holistic approach to life:**  
*Economy, treatment, maintenance housing, network etc.*

**Staff**





# What did we do?

## New methods

CTI - critical time intervention

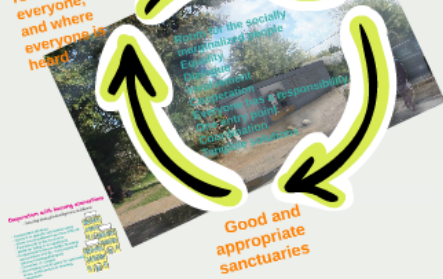
Same methodology in  
social work with citizens

Social caretakers



## An inclusive city

A city with  
room for  
everyone,  
and where  
everyone is  
heard



## Housing

Cooperation and networks  
about housing

- Locate appropriate housing
- Maintain apartments
- Avoid becoming homeless



2008	346 cases ended with eviction
2009	356 cases ended with eviction
2010	353 cases ended with eviction
2011	341 cases ended with eviction
2012	298 cases ended with eviction
2013	235 cases ended with eviction
2014	211 cases ended with eviction

Very few citizens in the Housing first programme were evicted by the bailiff

# Housing

Cooperation and networks about housing

- Locate appropriate housing
- Maintain apartments
- Avoid becoming homeless



2008	346 cases ended with eviction
2009	356 cases ended with eviction
2010	353 cases ended with eviction
2011	341 cases ended with eviction
2012	298 cases ended with eviction
2013	235 cases ended with eviction
2014	211 cases ended with eviction

Very few citizens in the Housing first programme were evicted by the bailiff

# New methods

CTI - critical time intervention

Same methodology in  
social work with citizens



Social caretakers

inclusive city

Agreen  
corp

# An inclusive city

A city with  
room for  
everyone,  
and where  
everyone is  
heard

Agreements and  
cooperation  
models as fast  
response

Room for the socially  
marginalized people  
Equality  
Dialogue  
Involvement  
Cooperation  
Everyone has a responsibility  
One entry point  
Coordination  
Tangible solutions

Good and  
appropriate  
sanctuaries

## Cooperation with housing associations

- housing strategic development in Odense

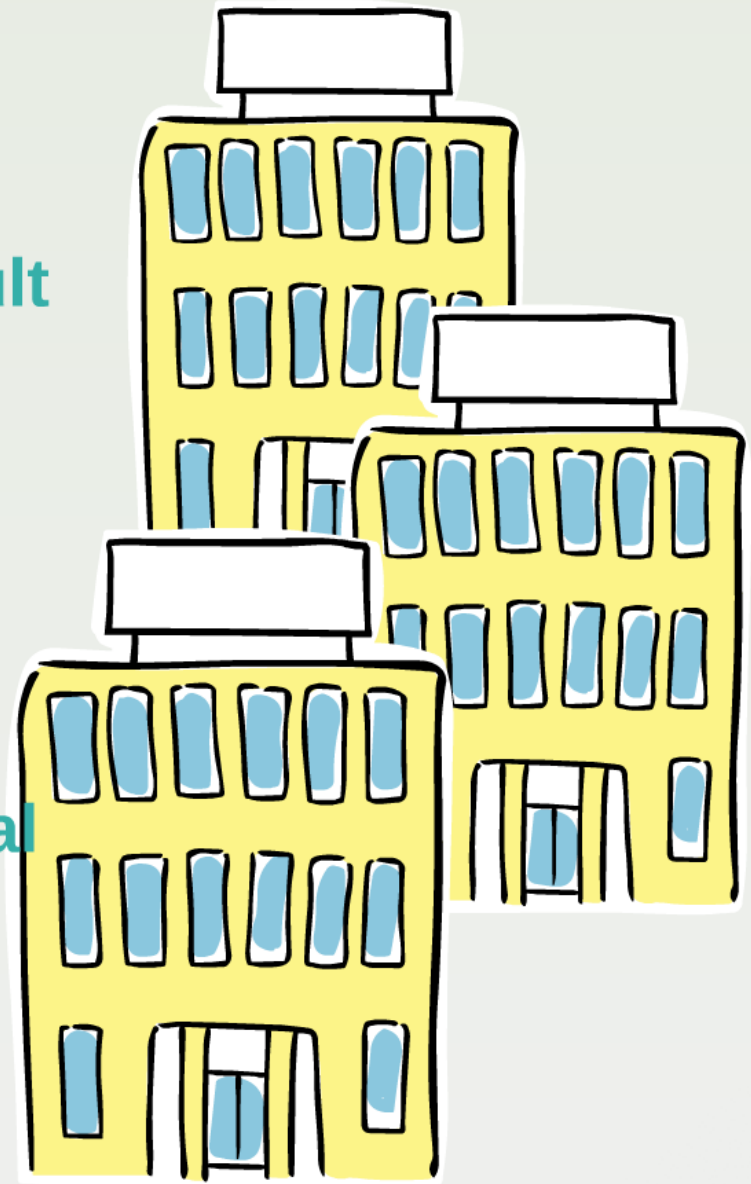
- Cooperation strategy
- Network in specific residential areas
- When neighbourhood becomes difficult
- Part-time job in the local area
- Skills for living in an apartment
- Cooperation between public housing associations and the municipality of Odense (styringsdialogen)
- Committee of Contact
- Developing overall plans for residential areas, participation in steering committees



# Cooperation with housing associations

- *housing strategic development in Odense*

- Cooperation strategy
- Network in specific residential areas
- When neighbourhood becomes difficult
- Part-time job in the local area
- Skills for living in an apartment
- Cooperation between public housing associations and the municipality of Odense (styringsdialogen)
- Committee of Contact
- Developing overall plans for residential areas, participation in steering committees





# 2014

## Experiences

*Revitalization does not require further funding!*

- Require political support, management focus and qualified employees
- Require focus on close coordination, outreach efforts, housing strategy, civil involvement



## Challenges

- The youth - an even earlier focus
- Maintaining the valuebased line of thought
- Maintaining the inclusive city



## Facing forward

- Østerbro: urban renewal with a focus on social inclusion



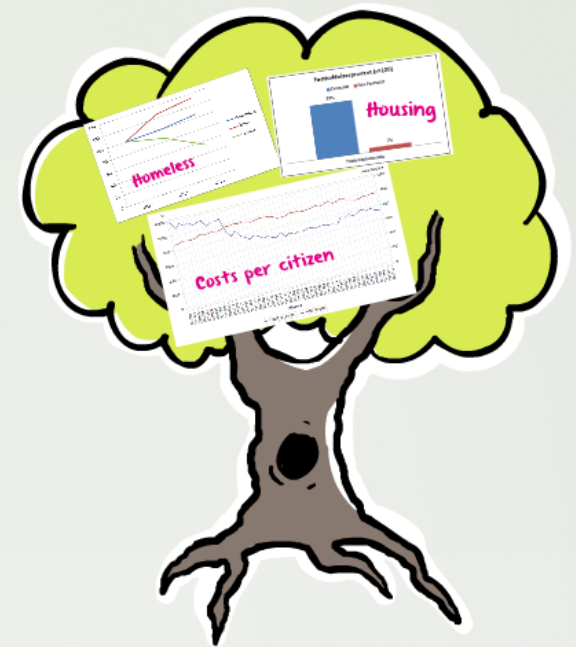
- Day centers: closer interaction with other efforts
- Focus on the array of options: strengthen social efforts fx via drug consumption room, drug and alcohol treatment
- Inclusive city

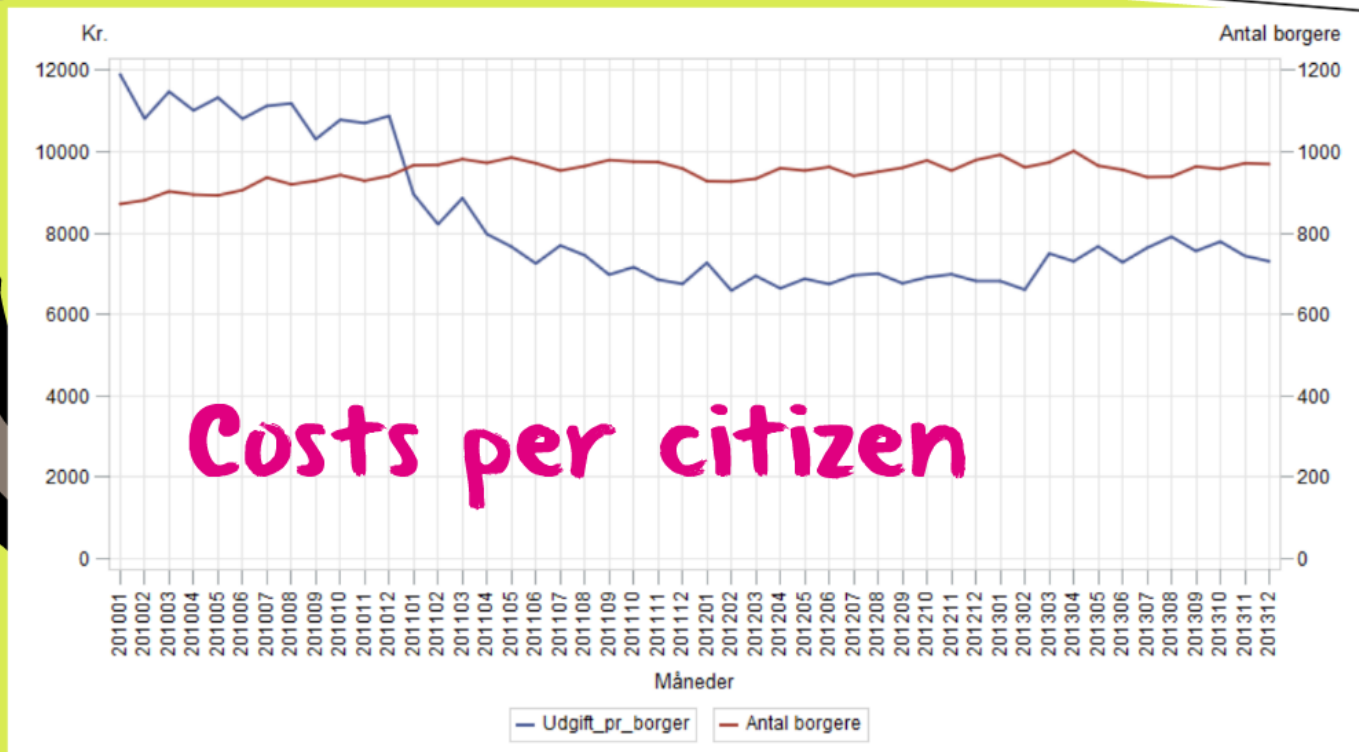
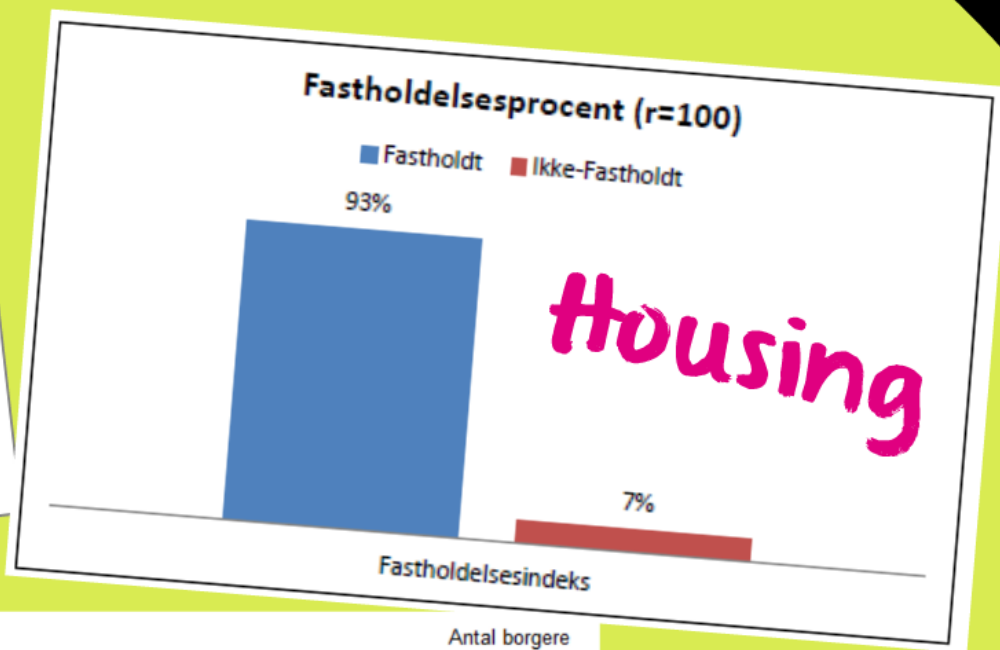
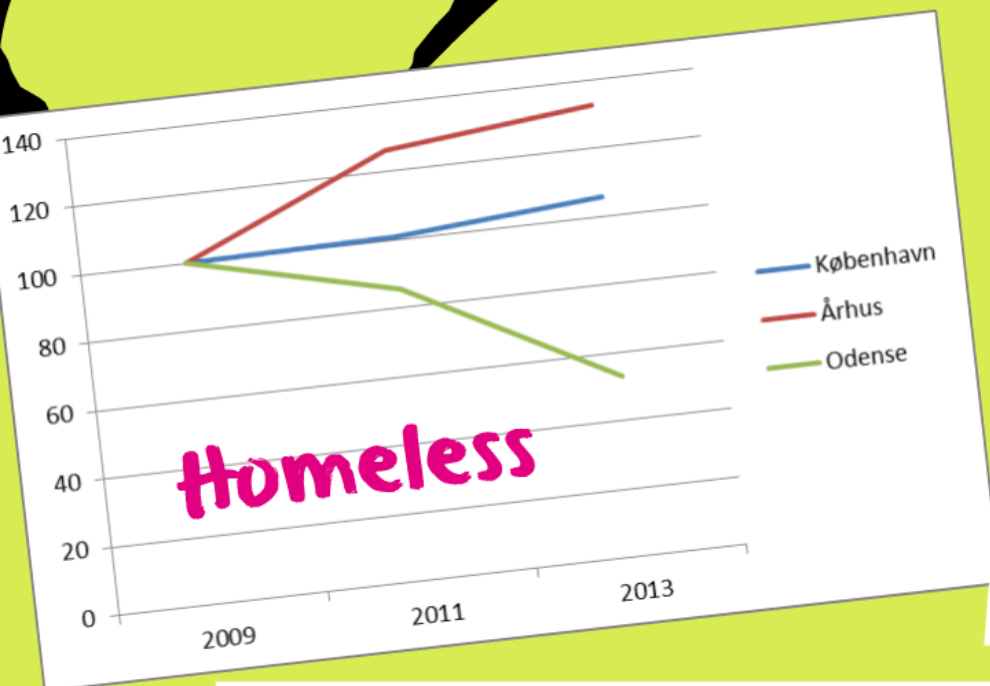


# Experiences

*Revitalization does not require further funding!*

- Require political support, management focus and qualified employees
- Require focus on close coordination, outreach efforts, housing strategy, civil involvement





# Facing forward

- Østerbro: urban renewal with a focus on social inclusion



- Day centers: closer interaction with other efforts
- Focus on the array of options: strengthen social efforts fx via drug consumption room, drug and alcohol treatment
- Inclusive city

# Challenges

- The youth - an even earlier focus
- Maintaining the valuebased line of thought
- Maintaining the inclusive city





## without a map

